

WELCOME BACK!



We hope you all had a great holiday. Thank you so much for all the kind messages, cards and gifts, which we enjoyed opening over the holidays, we are truly touched by your kindness and generosity.

DIFFERENT FAMILIES - SAME LOVE

This week we have been talking to pupils about different families, same love and the importance of valuing all human life.

OUR WORLD BOOK DAY

Friday 2nd March

Advance notice! Start to design, plan and prepare your book character costumes.



LUNCHBOXES



Please be mindful lunchboxes must be healthy and balanced. Q. What does that mean? For guidance on healthy balanced lunchboxes please see link.

www.nhs.uk/change4life/recipes/healthier-lunchboxes

IMPORTANT INFORMATION

It is important that parents/carers escort their children onto school premises at all times, this includes breakfast club and booster classes in a morning.

Reception Classes - parents/carers please ensure you escort your child down the path when collecting at the end of the school day. Please do not let your children play or run on the grassed areas. Thank you.

DATE	EVENT
27 Jan	Holocaust Memorial Day
30/31 Jan 30 Jan-6 Feb	Big Schools Birdwatch National Storytelling Week
Feb	National Heart Month
6/7 Feb	Safer Internet Day
13 Feb	Shrove Tuesday (Pancake day)
14 Feb	Ash Wednesday
16 Feb	St Valentine's Day Disco and Chinese New Year - Half term.
19-23 Feb	Half term
26 Feb	Back to School
1 Mar 	St David's Day
2 Mar	World Book Day - Dressing up day
5 Mar	SATs Meeting for Y6 parents
7 Mar	World Math's Day
9-18 Mar	Science Week
12 Mar	Shakespeare Week
17 Mar 	St Patrick's Day
19 Mar	Pupil progress reports meetings
21 Mar	World Poetry Day
22 Mar	World Water Day
TBC	Easter Service
29 Mar	End of term - Pupils finish at 1pm
16 Apr	Back to school
23 Apr 	St George's Day
w/c 14 May	Y6 SATS
15 May - 14 Jun	Month of Ramadan
23/24 May	Y6 Woodlands Trip
28 May - 1 June	Half term
4 June	Training Day - School closed to pupils
5 June	Back to school
17 July	End of term party/disco
19 July	Year 6 Leavers service
24 July	Last day of term - Pupils finish at 1pm

****STARS OF THE WEEK****



BACK NEXT WEEK

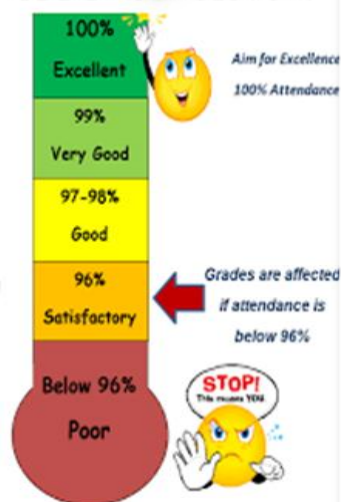
IMPORTANT INFORMATION

****PUPIL ABSENCE****

All pupil absences MUST be reported directly to the school office.

Thank you.

ATTENDANCE



THE LAW



Did you know, if attendance is less than 96% you are at risk of being fined and/or receiving a prison sentence? Please respect the law.

ATTENDANCE AWARD

Well done to
3YA who had
99.1%
attendance the
last week of
term.



MANNERS MATTER MOST

at Birchills Church of England Community Academy



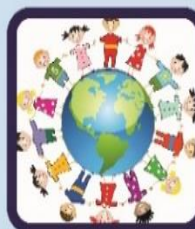
1. We will...
make you feel
welcome



2. We will...
make time to
listen to you



3. We will...
be polite and
understanding



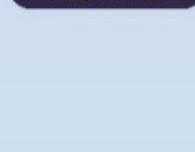
4. We will...
keep you
informed and
explain what is
happening



5. We will...
admit to mistakes
and do all we can
to put them right



6. We will...
value your point
of view



7. We will...
be caring and
kind

8. We will...
keep you involved

9. We will...
go the extra mile

10. We will...
treat everyone
equally



In the name of the Father, the Son and the Holy Spirit
Amen

P.E. UNIFORM REMINDER

From now on, PE days/After school sports clubs, pupils can come to school in their PE kits. If they are wearing T-shirt and shorts these may be worn under uniform or alternatively they may wear their black PE tracksuits.

We want to spend more time on actual PE and significantly reduce the time changing; this will also take any anxiety away for those pupils who feel uncomfortable about changing in school.



MONDAY - Year 2
TUESDAY - Year 5
WEDNESDAY - Year 3
THURSDAY - Reception & Year 6
FRIDAY - Years 1 & 4



The PE uniform:

- Black trainers or black pumps (no bright coloured trainers allowed)
- Plain white t-shirt & black shorts AND/OR
- Plain black tracksuit/jogging bottoms & black sweatshirt with white t-shirt underneath.
- **NO LEGGINGS. NO OTHER colours, logos, or writing allowed.**
- **Swimming kit should be plain navy or black. Swimming hats to be worn (sold in school). Goggles not allowed. Pupils require a towel.**

SCHOOL UNIFORM REMINDER

Hairstyles should be sensible with no extreme styling or colours and long hair should be tied back with a bobble in the same colour as the hair.

The only jewellery items permitted are one pair of small stud earrings.

White shirt or white polo shirt

White shirt or polo shirt

Dark blue or black headscarf (no patterns or decoration)

Royal blue fleece or sweatshirt (preferably with school logo)

Royal blue fleece, sweatshirt or cardigan (preferably with school logo)

Royal blue Fleece, sweatshirt or cardigan (preferably with the school logo)

Grey trousers

Grey trousers, skirt or Pinafore dress

Grey skirt or Pinafore dress

Grey tights or grey/black socks

Grey trousers or grey / white salwar

Grey or black socks

Black school shoes (NOT trainers)

Smart black school shoes (NOT trainers)

Grey tights or grey/black socks

Smart black school shoes

CLICK IT!

If you see anything on the internet that upsets you click this button on your device and tell an adult you trust.



Homework

1. Pupils must read everyday. Reading is very important; it enriches vocabulary and improves writing skill.
2. Learn multiplication facts.
3. Learn number bonds to 10. How many different ways can you make the number 10? Learn to tell the time.
4. How many different ways can you make: 50p, £1.00, £5.00, £10.00, £100?
5. Being tidy, clean and organised.
6. Being polite. Manners matter most.
7. Being kind and caring

URGENT!

Be safe ONLINE and when you are out and about!

NEVER talk or walk with people you don't know!

Always YELL & TELL if someone is trying to hurt you!

Call 999 in an emergency.

Tel: 01922 721063

postbox@birchills.walsall.sch.uk

www.birchills.walsall.sch.uk

HELPLINES

NSPCC 0800 800 5000

Crimestoppers 0800 555 111

Samaritans

01922 624000 or 08457 909090

Citizen Advice Bureau 01922 700600

Domestic Violence

0800 389 5790 / 0800 389 6990 / 0779 667 2053

01952 406 767

Addictions, Misuse of Alcohol and Drugs

Alcoholics Anonymous - 0845 769 7555

Addiction Walsall (Drug Intervention Programme)
- 01922 646262

Childline - 0800 1111

Police - 999 emergencies only or 101 for other.

If you are worried about anyone or anything tell someone; it may just save a life.



Walk with me

Walk with me in the golden sun
Walk with me in the rain
Walk with me in happiness
Walk with me in pain.

Walk with me at morning time
When the world is light
Walk with me when evening comes
Watch me through the night.

A Really Good School

Dear God,

Let us make our school a really good school:

let us be kind,

let us be fair,

let us be honest,

let us be respectful,

let us be friendly,

Let us be ready to forgive,

Help us to start each day by remembering these things.

WEEKLY ATTENDANCE PER CLASS

RRB	RAM	1ES	1AB	2CB	2TM	3LB	3YA	4MB	4PS	5AG	5MW	6PP	6GP
92%	92.6%	96.1%	94.2%	96.2%	94.2%	96%	95.9%	94.9%	96.8%	96.5%	94.1%	95.8%	95.7%

KEEP UP TO DATE

www.birchills.walsall.sch.uk

We are pleased to inform you we are now virtually a paperless school, apart from pupils books and displays of course! We have no choice but to keep up to date with technological advances so you too will need to join us on our journey. Everything you need is on our website and also available to you via email and texts. If you would like more information please email postbox@birchills.walsall.sch.uk, ring 01922 721063 or pop in and see us.



Training Days for 2017/2018

Monday 4th September 2017

Tuesday 5th September 2017

Friday 22nd December 2017

Monday 8th January 2018

Monday 4th June 2018

<u>2017/2018</u>	<u>First day of term</u>	<u>Last day of term</u>
Autumn Term	Monday 4 th September 2017	Friday 20 th October 2017
Autumn Term	Monday 30 th October 2017	Friday 22 nd December 2017
Spring Term	Monday 8 th January 2018	Friday 16 th February 2018
Spring Term	Monday 26 th February 2018	Thursday 29 th March 2018
Summer Term	Monday 16 th April 2018	Friday 25 th May 2018
Summer Term	Monday 4 th June 2018	Tuesday 24 th July 2018

From time to time we may need to change a date, at very short notice, due to unforeseen circumstances, we apologise for any inconvenience.





LEARN PANTOSAUR'S FIVE EASY RULES FOR STAYING SAFE

P PRIVATES ARE PRIVATE

Your underwear covers up your private parts and no one should ask to see or touch them. Sometimes a doctor, nurse or family members might have to. But they should always explain why, and ask you if it's OK first. Remember, what's in your pants belongs only to you.

A ALWAYS REMEMBER YOUR BODY BELONGS TO YOU

No one should ever make you do things that make you feel embarrassed or uncomfortable. If someone asks to see or tries to touch you underneath your underwear say 'NO' – and tell someone you trust and like to speak to.

N NO MEANS NO

You always have the right to say 'no' – even to a family member or someone you love. You're in control of your body and the most important thing is how YOU feel. If you want to say 'No', it's your choice.

T TALK ABOUT SECRETS THAT UPSET YOU

There are good secrets and bad secrets. If a secret makes you feel sad or worried, it's bad – and you should tell an adult you trust about it straight away.

S SPEAK UP, SOMEONE CAN HELP

It's always good to talk about stuff that makes you upset. If you're worried, go and tell a grown up you trust – like a family member, teacher or one of your friend's parents. They'll say well done for speaking out and help make everything OK. You can also call Childline on 0800 1111 and someone will always be there to listen.

Remember all of these rules and they'll help you stay safe, just like Pantosaur.

